

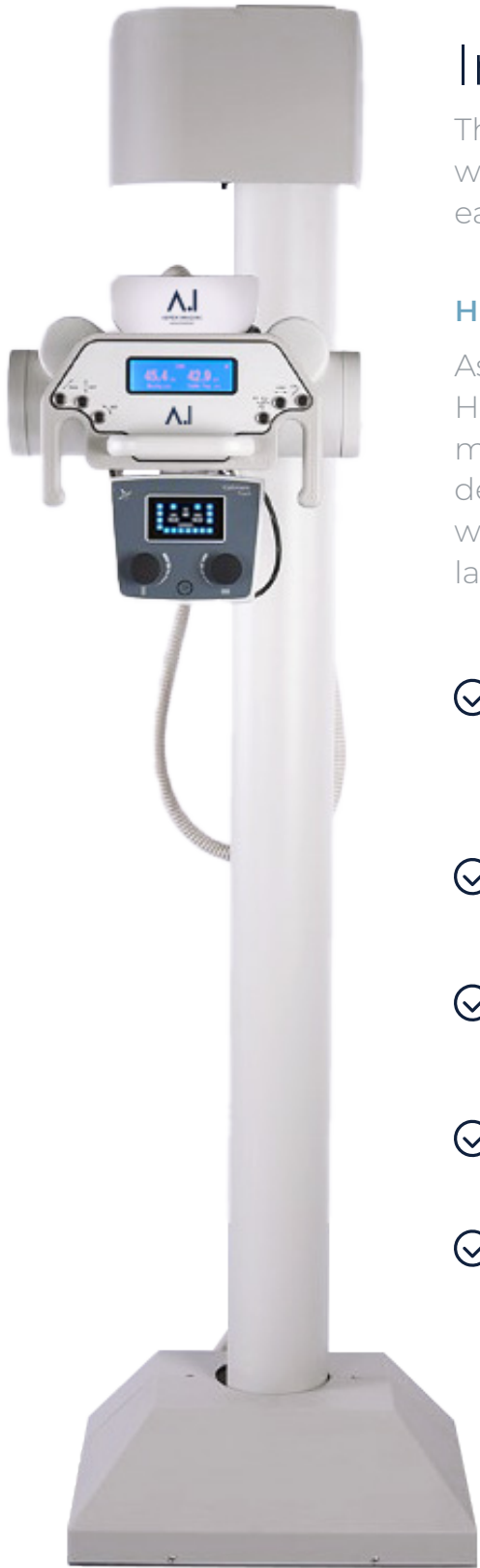


ASPEN IMAGING  
HEALTHCARE



# AspenFDR H.D.

PRODUCT BOOKLET



# Introducing AspenFDR H.D.

The AspenFDR H.D. promotes a freestanding design without wall attachments for rapid installation and ease of alignment.

## HEAVY-DUTY FEATURES

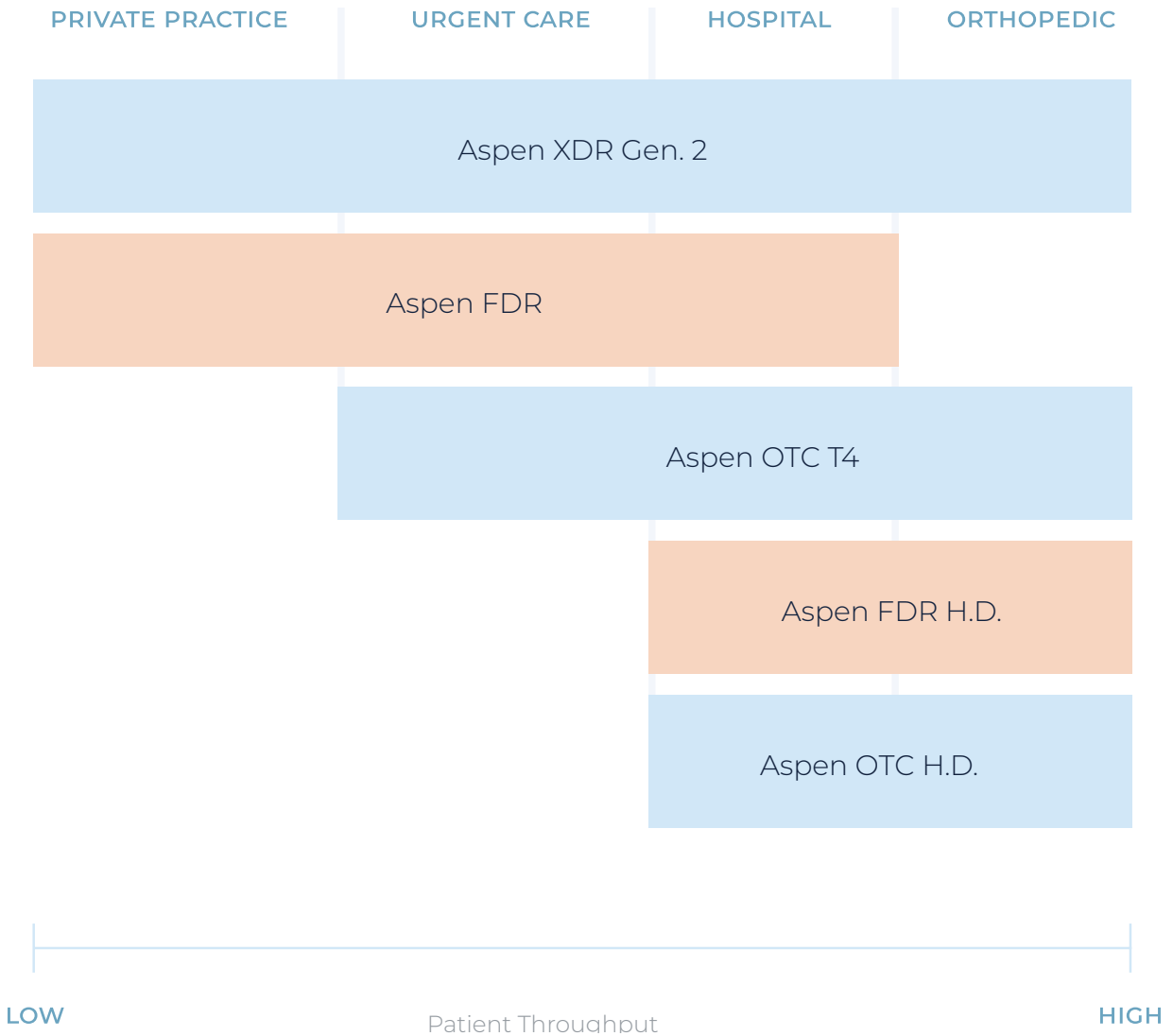
Aspen Imaging Healthcare's Heavy-Duty line of digital floor mounted x-ray systems are designed to be your imaging workhorse, manufactured to last decades.



- ✓ **MADE IN THE USA FROM PRECISION MACHINED COMPONENTS**  
(93% domestic content)
- ✓ **MANUFACTURED WITH AIRCRAFT ALUMINUM AND STEEL CONSTRUCTION**
- ✓ **ALL MOTION COMPONENTS ARE MADE FROM BALL BEARING AND OILITE®**
- ✓ **DURABLE POWDER COATED SURFACES**
- ✓ **ALL MECHANICAL COMPONENTS ARE ELECTROPLATED FOR SUPERIOR CORROSION PROTECTION**

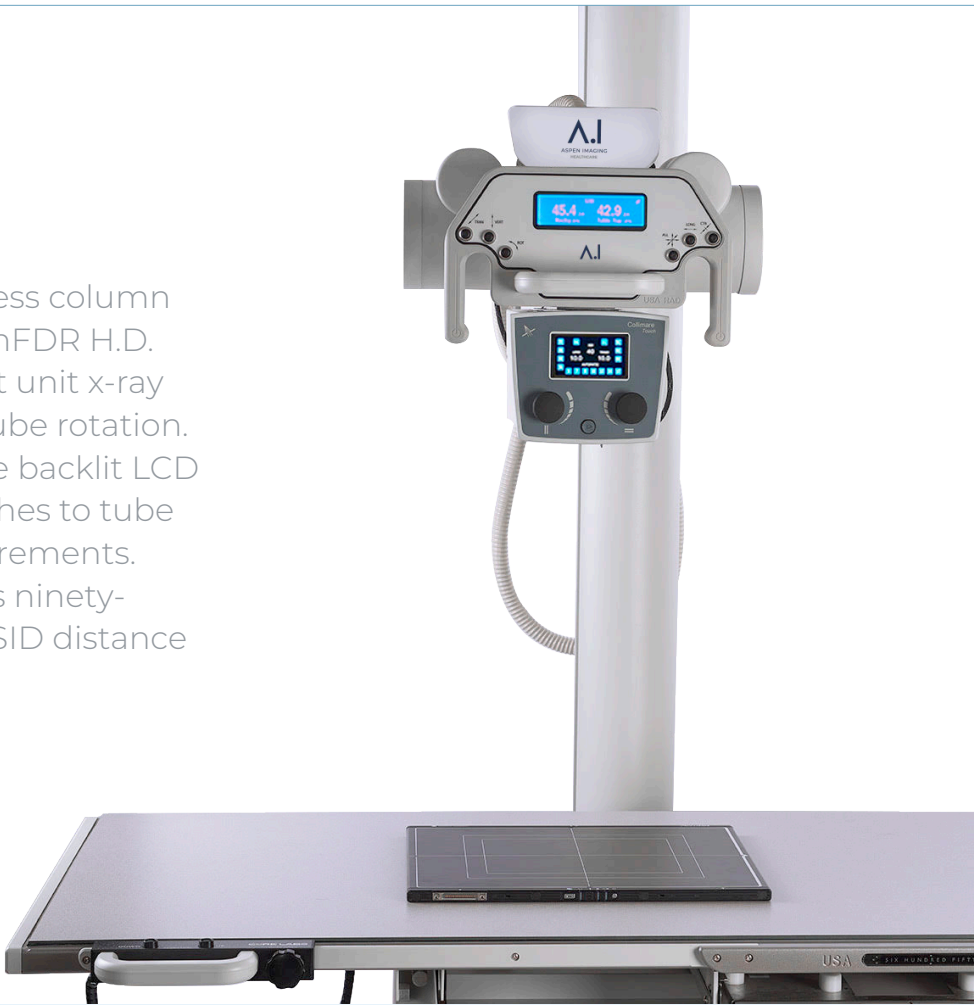


# Aspen Imaging Stationary X-Ray Systems for Every Application



# Floor Mounted Tube Stand

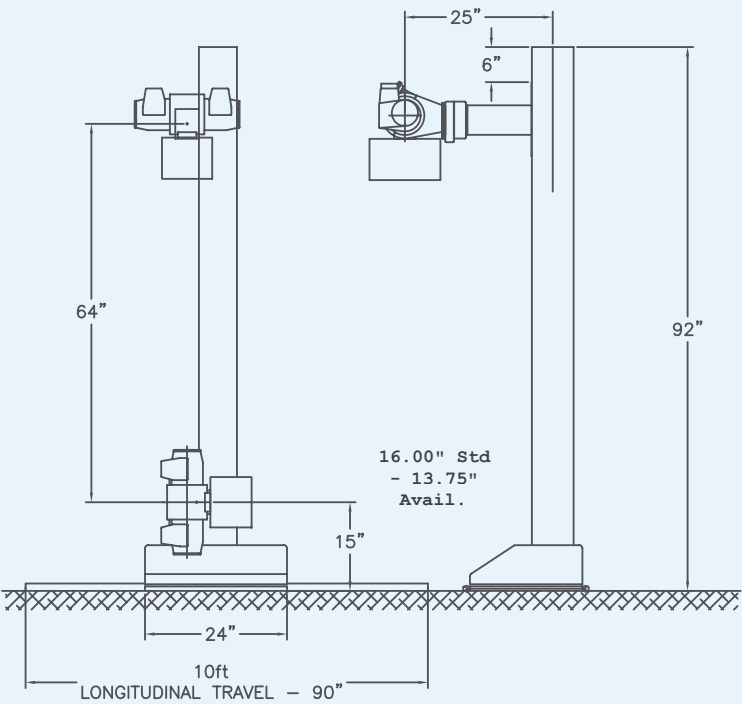
Featuring an exclusive seamless column for extreme rigidity, the AspenFDR H.D. supports up to 1.5 million heat unit x-ray tubes and 180-degree x-ray tube rotation. When rotated left or right, the backlit LCD display changes from SID inches to tube angulation in one-degree increments. Once the tube angle achieves ninety-degrees, it displays real time SID distance to a wall stand.



FLOOR MOUNTED TUBE STAND SPECIFICATIONS	
STANDARD LONGITUDINAL LENGTH	90" (extended travel options available)
HEIGHT	92"
MINIMUM DISTANCE TO WALL	12"
MAX HEIGHT OF TUBE CENTER	79"
MINIMUM HEIGHT OF TUBE	16" (13.75" also available)
COLLAPSED LENGTH FROM TUBE STAND	25"
TRAVEL FROM TABLE CENTER	+/- 5" in both directions
COLUMN ROTATION	180
TUBE ROTATION	180
FOOTPRINT	120" x 20"
ELECTRICAL REQUIREMENTS	115/220 VAC, 50/60HZ, 5 Amps



- Column contains hardened, serviceable, bearing races for limitless life
- Positive vertical lock for position retention during power outage
- Potentiometers for height & longitudinal feedback for accurate SID positioning
- User interface displays real timetable/BuckySID allowing quick SID positioning and rapid patient throughput



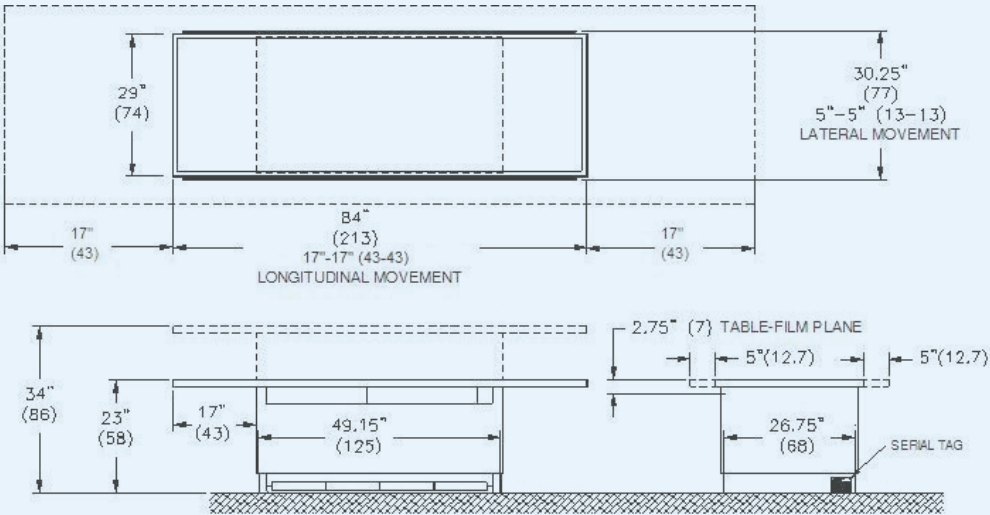
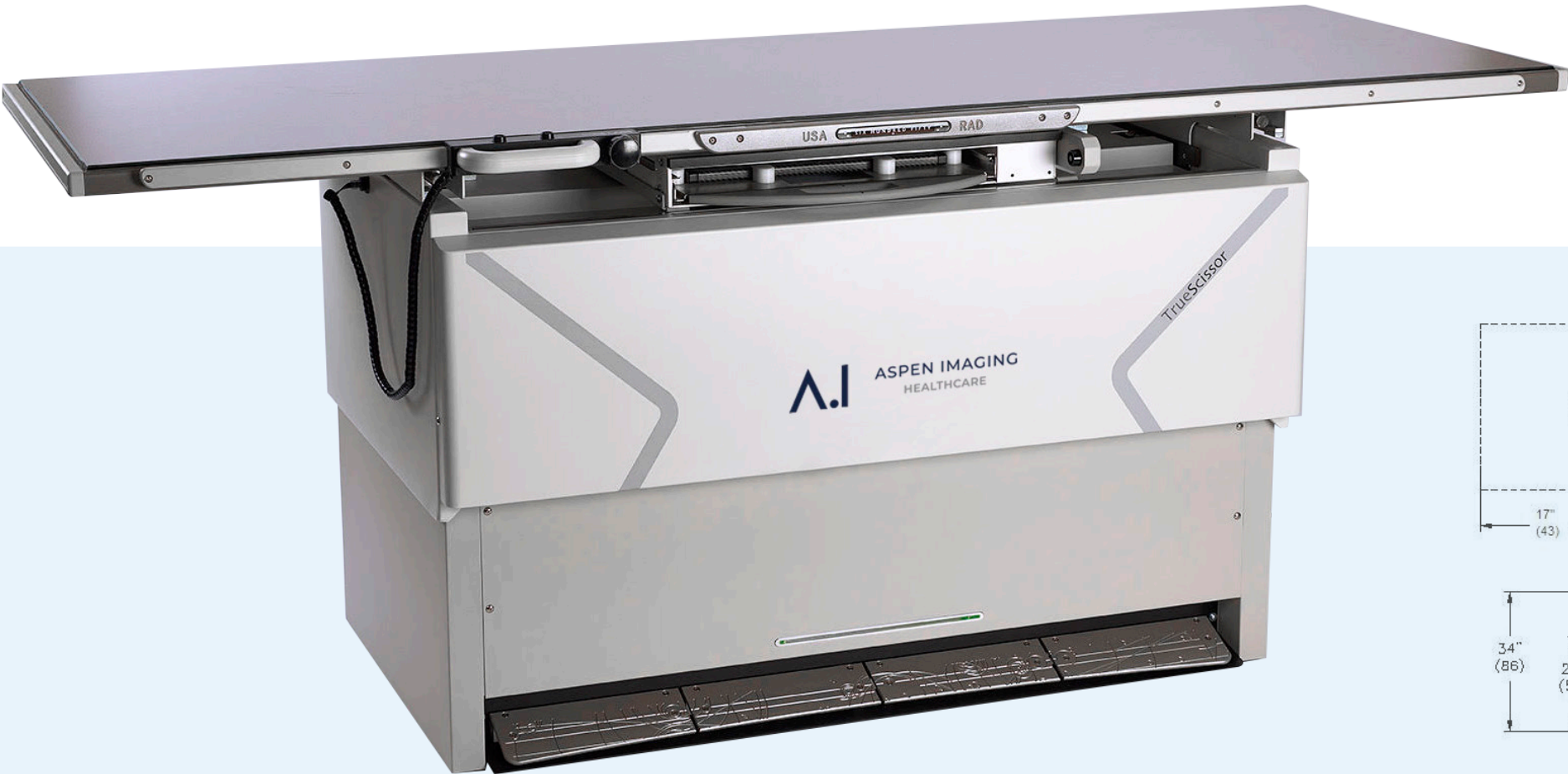
Table

This elevating 6-way table is designed as a stand-alone system, consisting of plug-in cables and a single board interface compatible with all standard X-ray equipment.

The table height is adjustable to accommodate ambulatory, wheelchair, or gurney patients. Easier transfer is accomplished for both patient and operator. The vertical movement is motorized and controlled by applying pressure to the foot pedals. In unique applications, optionally, the foot pedal controls can be configured to function only when an auxiliary button is depressed.

- ✓ **TESTED 60,000 UP/DOWN WITH A 650LB LOAD**
- ✓ **BARIATRIC PACKAGE:**  
Bariatric magnet booster for extra-strong table-top retention when loading patients  
  
Bariatric grade 3/4" solid steel scissor lift mechanism
- ✓ **SLIDE OUT PC BOARD FOR EASY SERVICE AND INSTALLATION**

TABLE SPECIFICATIONS	
MAXIMUM PATIENT WEIGHT	600 lbs / 765 lb (XL table option)
TABLETOP DIMENSIONS	84" X 30.25"
TABLETOP HEIGHT	23" to 34"
SIDE CLEARANCE	17"
CASSETTE HOLDER TRAVEL	20"
TABLE PEDESTAL LENGTH	50.75"
TABLE PEDESTAL WIDTH	28.37"
ELECTRICAL REQUIREMENTS	115 VAC, 50/60 HZ, 10 Amps



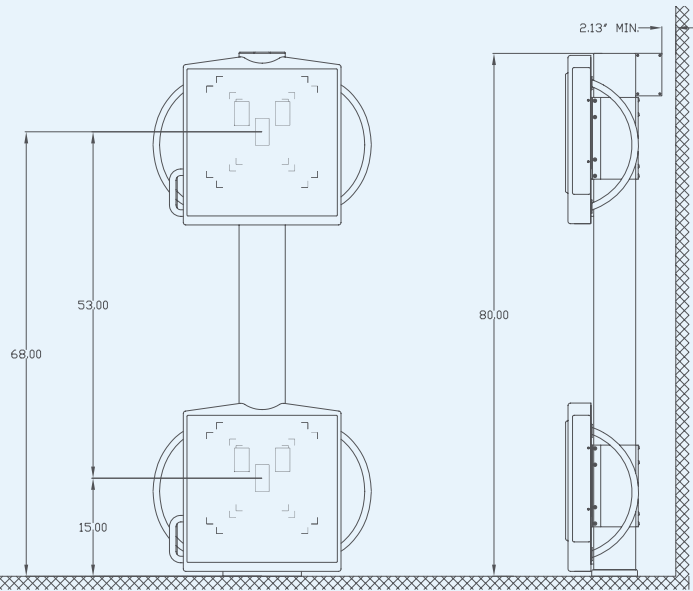




# Wall Stand

Aspen Imaging wall stands are fully counterbalanced units and use electronic positive locks for patients and technician safety in the event of power failure. Featuring seamless columns for extreme rigidity, these columns contain hardened, serviceable, bearing races for limitless life.

- ✓ COUNTERWEIGHTS ARE SECURED BY TWIN, MULTISTRANDED STAINLESS STEEL CABLES
- ✓ FINISHED WITH DURABLE POWDER COATED SURFACES AND BRIGHT NICKEL HARDWARE, TO GIVE LONG-LASTING, PROFESSIONAL APPEARANCE – TRUE HOSPITAL-GRADE QUALITY



WALL STAND SPECIFICATIONS	
DETECTOR SIZE	17x17 or 14x17 (please confirm at time of order)
ELECTRICAL REQUIREMENTS	24 VDC, 50/60 HZ, 1.5 amps
ACCEPTS BUCKYS, GRIDS AND ION CHAMBERS	
RIGHT- AND LEFT-HAND LOAD AVAILABLE	





ASPEN IMAGING  
HEALTHCARE

801 Jupiter Rd Suite 200, Plano, TX 75074, USA  
sales@aspensate.com | (+1) 214-257-0113

[WWW.ASPEN-IMAGING.COM](http://WWW.ASPEN-IMAGING.COM)

DISTRIBUTED BY

## About Aspen Imaging

Aspen Imaging Healthcare is a Texas-based Original Equipment Manufacturer (OEM) providing complete imaging solutions for X-ray distributors and custom designed, private-labeled solutions for OEMs across the Americas.

Founded in 2015, Aspen Imaging has become one of the fastest growing Medical Imaging companies with offices in the United States, Canada, Mexico and South Korea.

